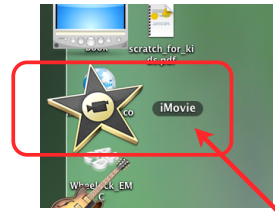


Simple Editing Using iMovie

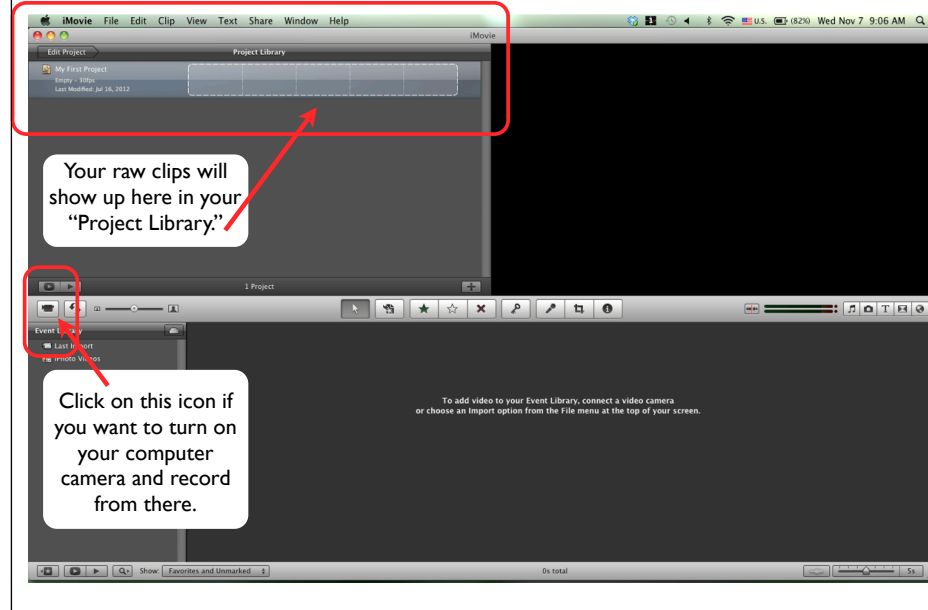
First: Plug in your source of footage: your camera, or your



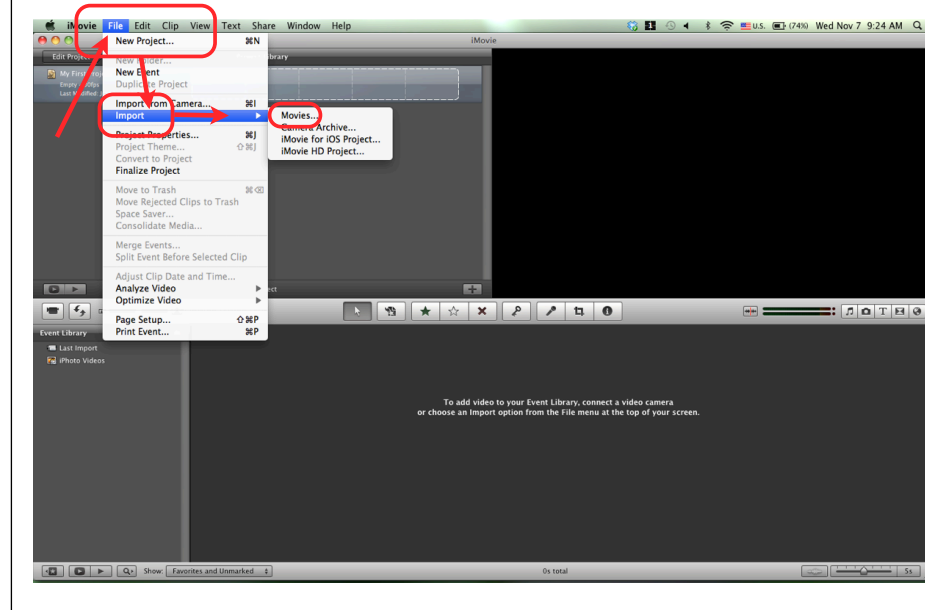
Then: Open iMovie from your Applications folder, or your dock:



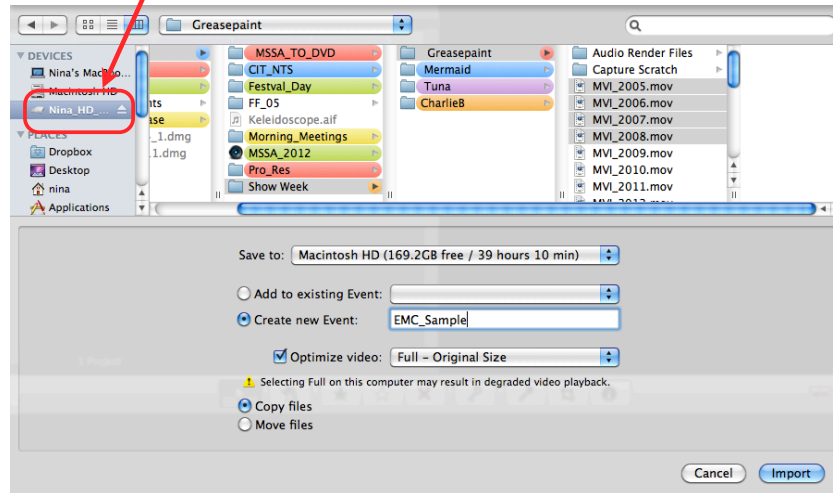
Simple Editing Using iMovie



Importing files to iMovie

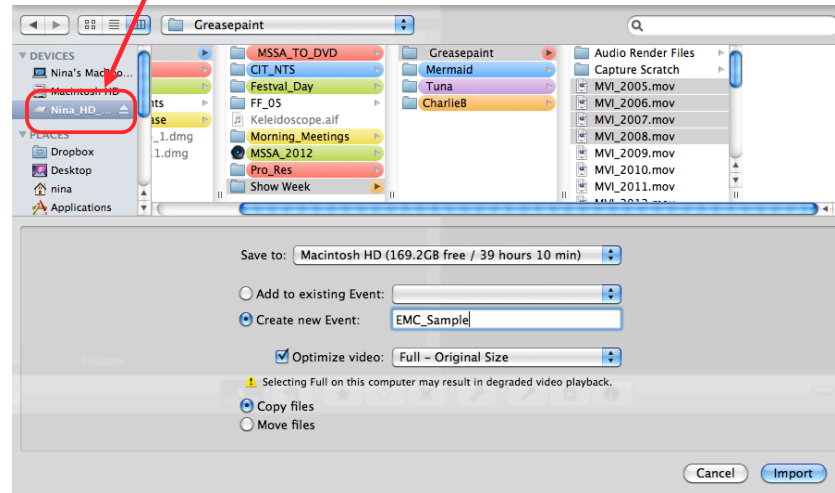


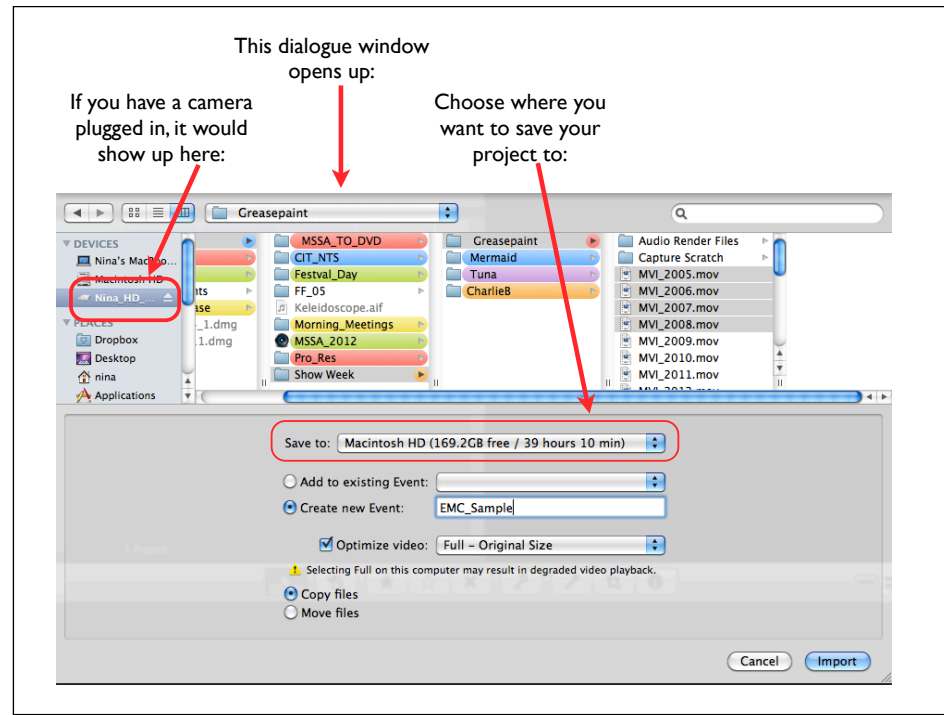
If you have a camera plugged in, it would show up here:

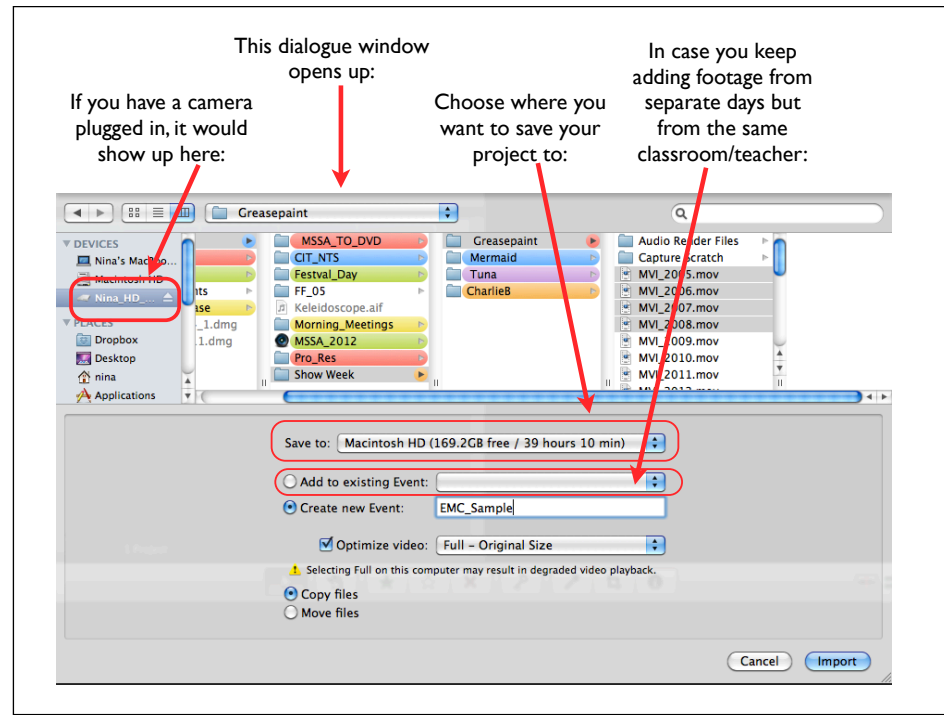


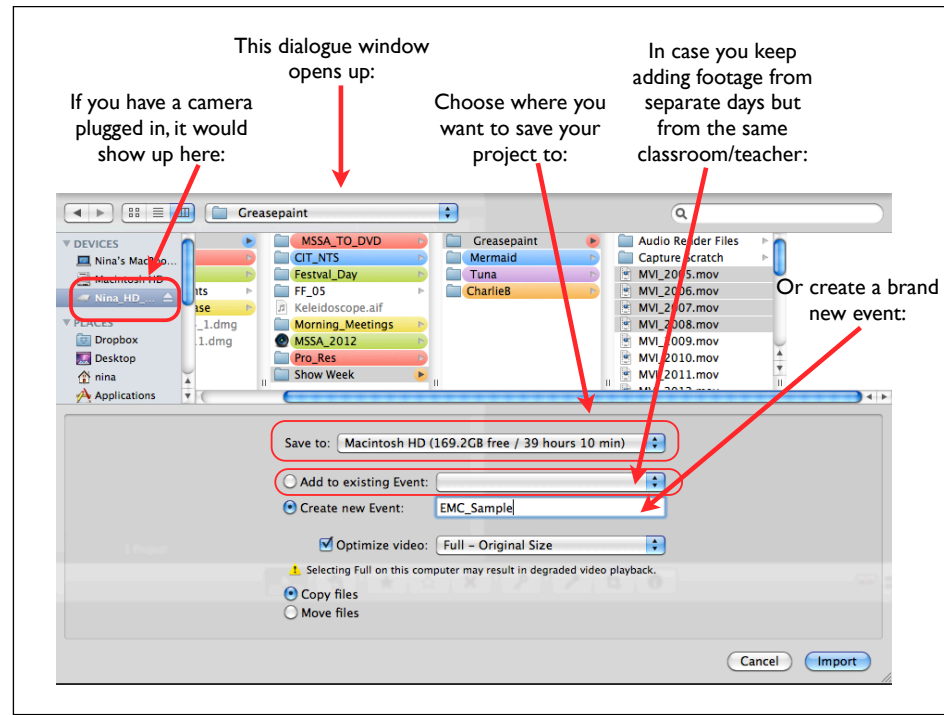
This dialogue window
opens up:

If you have a camera
plugged in, it would
show up here:

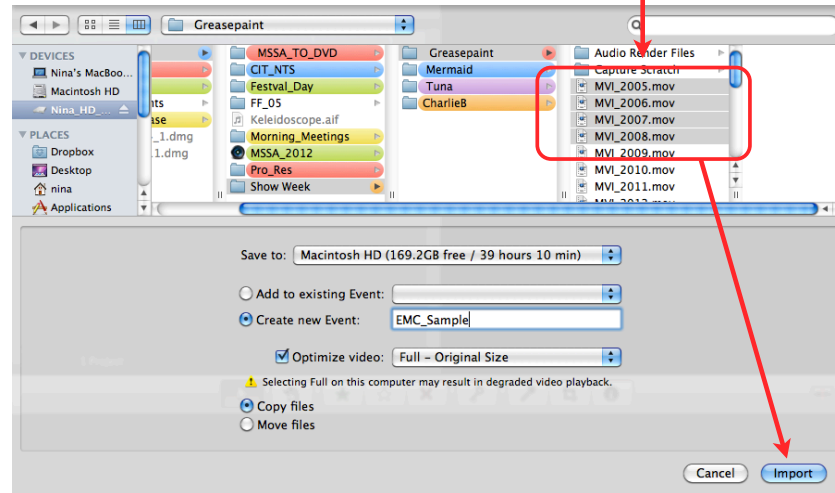




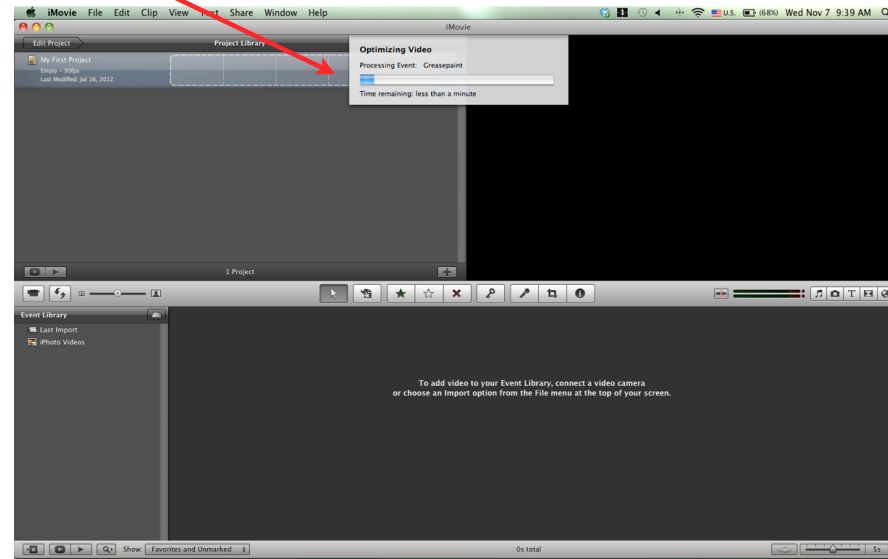




Select your files and
click on "Import."



Then, you will get this window:



Using Video Technology to Improve Mentoring (3 Questions):

Things I already knew about my practice.

Observations and ideas worth remembering.

Things I would like to know more.